

## 26 Wold Street

Malton, YO17 9AA

Number 26 Wold Street is a spacious two bedroom apartment located close to all the local amenities of Norton centre. Also within easy reach of the rail and bus stations. The accommodation is arranged over two floors and consists of a ground floor lobby, first floor kitchen, sitting room, two bedrooms and bathroom. The property benefits from gas central heating and majority double glazing. Available August ideally on a long term let. NO PETS OR SMOKERS.

**£625 Per Month**

# 26 Wold Street

Malton, YO17 9AA



- Two bedroom apartment
- Located in the heart of Norton
- NO PETS OR SMOKERS
- Arranged over two floors with spacious rooms
- Within easy reach of rail and bus stations
- Long term let preferred
- Neutral decor throughout
- Available end of August
- Gas central heating

## Ground Floor Entrance Lobby

Tiled floor and UPVC double glazed door to the front aspect. Stairs leading to the first floor.

## Kitchen (First Floor)

11'1" x 9'10" (3.4 x 3)  
Range of wall and base units incorporating a stainless steel single drainer sink unit with mixer tap. Dishwasher point. Coving to ceiling. Casement window to the side. Tiled Floor.

## Sitting Room

13'1" x 12'5" (4 x 3.81)  
Feature fireplace with electric fire.

Casement window to the front aspect. Telephone and TV points. Coving to the ceiling. Three wall light points. Radiator.

## Bathroom

10'9" x 5'6" (3.3 x 1.7)  
White suite comprising of panel bath, low flush WC and pedestal basin. Casement window to the rear. Radiator

## Landing Area

11'1" x 5'2" (3.4 x 1.6)  
Gas central heating boiler. Door to the rear fire escape and stairs to bedroom one. Radiator.

## Bedroom One

16'0" x 12'5" (4.9 x 3.81)  
Stripped floorboards. Fitted wardrobe. Casement window to the rear. Telephone point and radiator.

## Bedroom Two

9'1" x 9'1" (2.79 x 2.79)  
Casement window to the front aspect and radiator.

## Services

Mains water, electricity and gas. Connection to mains sewerage.

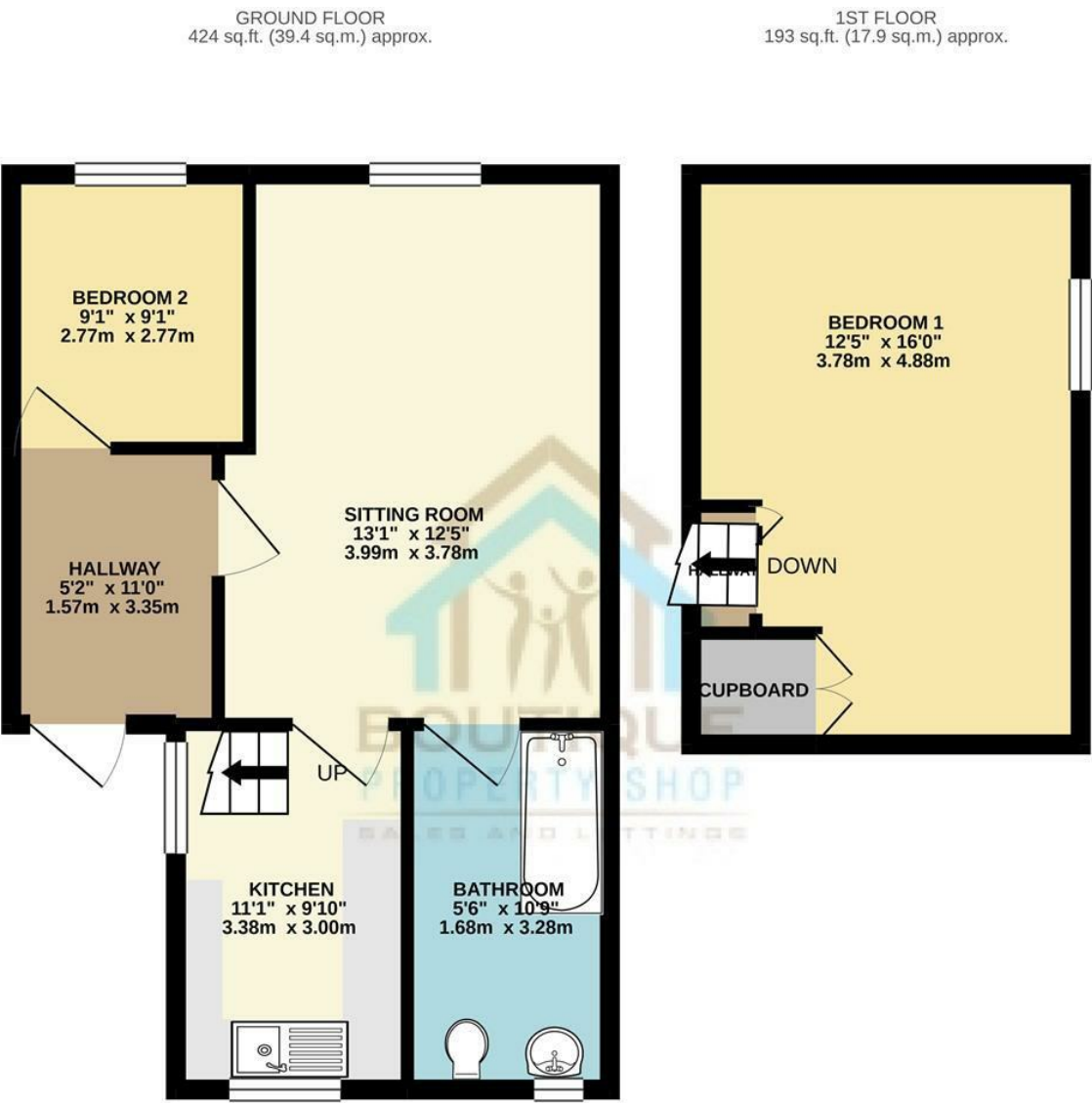
## Council Tax Band A



## Directions



Floor Plan



TOTAL FLOOR AREA : 617 sq.ft. (57.3 sq.m.) approx.

Whilst every attempt has been made to ensure the accuracy of the floorplan contained here, measurements of doors, windows, rooms and any other items are approximate and no responsibility is taken for any error, omission or mis-statement. This plan is for illustrative purposes only and should be used as such by any prospective purchaser. The services, systems and appliances shown have not been tested and no guarantee as to their operability or efficiency can be given.

Made with Metropix ©2020

These particulars, whilst believed to be accurate are set out as a general outline only for guidance and do not constitute any part of an offer or contract. Intending purchasers should not rely on them as statements of representation of fact, but must satisfy themselves by inspection or otherwise as to their accuracy. No person in this firms employment has the authority to make or give any representation or warranty in respect of the property.

